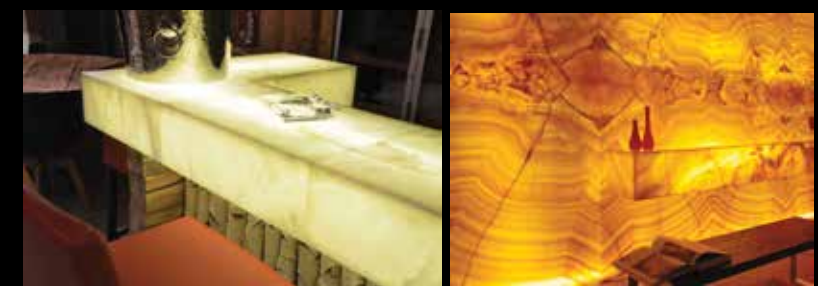




FTP LUX DISTRIBUTION

Unique Luxury Wall Collection





DESIGN COLLECTION

CHANGE YOUR WALL

TRANS
STONE
SERIES



DESIGN
COLLECTION

CHANGE YOUR WALL

FLEXI CLAY PANEL

THE AESTHETIC AND ENERGY OF NATURAL SOIL

BENEFITS OF CLAY

- Completely green product.
- Recycling material.
- 100% resistance to fire, unfired.
- Breathable and healthy.

Flexi-Clay product that produced by the development of clay which a part of handicrafts in all known periods. It takes its color and structure from completely natural soils. It is thin, light, durable and flexible product.

This natural Flexi-Clay product which makes your wall breathable is an unique product that has been developed to create an extremely healthy living space.

The highlights of the Flexi-Clay product is self-cleaning natural product, stain resistant, and extremely durable.

Flexi-Clay which has A1 class fire certificate can allow you to create natural and aesthetic areas for your interior, exterior and floor.

PRODUCT FEATURES: • Flexible and Light

- Durable and unbreakable
- %100 unfired • stain-resistant
- Odorless, moisture resistant.
- Eco-friendly



K
038 C4
22,5X6CM



A
326 C4
24X6CM



R
085089
22,2X6,3CM



R
054 C4
22,2X6,3CM



GR
043
159X58CM



GR
052
159X58CM



052
120X60CM



SILVER
MIST
STONE
115X57,5CM



PHANTOM
115X57,5CM



SUNNYE
115X57,5CM



VOLCANO
115X57,5CM



MIST
STONE
115X57,5CM



GOLDEN
LOLITE
115X57,5CM



• The ceramic glue or similar glue must be apply to the back side of the product evenly.



• The product places on the flat and clean wall. If you want to suture for your application, you have to give a space for joint.



• The preferred joint glue fill to space.



• Provide to settle joint glue to spaces well.



• The overflow glue can be clean with tool such as putty knife.



• You can clean the joint gaps with a dry cloth.



• The pieces can place irregularly for a better result.

TEXTURES

PVC PEEL
& STICK
WOOD
MOSAIC
SERIES

PEEL &
STICK
METAL
MOSAIC
SERIES



DESIGN
COLLECTION

CHANGE YOUR WALL

SELF
ADHESIVE
MOSAICS

SELF ADHESIVE MOSAICS

PEEL & STICK METAL MOSAIC SERIES

For the stylish home designer, Metal mosaic tiles is among the most popular materials in the marketplace today. Metal can bring a sleek look to any kitchen, backsplash or other interior. Metal mosaic tiles is versatile and strong material, and it can easily be tinted with all sorts of hues, and as bright or muted as you would wish. Metal also offers a texture that is not duplicated by any other material: brushwork. This lining gives Metal mosaic tile an ability to meld intersecting lines that other materials lack.

This self adhesive mosaic tile sets an elegant tone in your kitchen or bathroom. The cool hues offer a tranquil vibe, allowing you and guests to feel perfectly at ease in your home.

PVC PEEL & STICK WOOD MOSAIC SERIES

Our premium peel & stick wood mosaic will add a touch of class and comfort to your home. The wooden mosaic tiles are inspired by nature and help you create a modern and beautiful space in your home. Decorate your dream space yourself with this product.

| PRODUCT NAME | SIZE | THICKNESS | DESCRIPTION |
|--------------|----------------|-----------|--------------|
| SILVER METAL | 30,4 X 30,4 CM | 4MM | PEEL & STICK |
| GOLD METAL | 30,4 X 30,4 CM | 4MM | PEEL & STICK |
| HEXAGON WOOD | 30,4 X 30,4 CM | 3MM | PEEL & STICK |
| SQUARE WOOD | 30,5 X 30,5 CM | 3MM | PEEL & STICK |

| ÜRÜN ADI | ÖLÇÜ | KALINLIK | AÇIKLAMA |
|--------------|----------------|----------|--------------|
| SILVER METAL | 30,4 X 30,4 CM | 4MM | PEEL & STICK |
| GOLD METAL | 30,4 X 30,4 CM | 4MM | PEEL & STICK |
| HEXAGON WOOD | 30,4 X 30,4 CM | 3MM | PEEL & STICK |
| SQUARE WOOD | 30,5 X 30,5 CM | 3MM | PEEL & STICK |

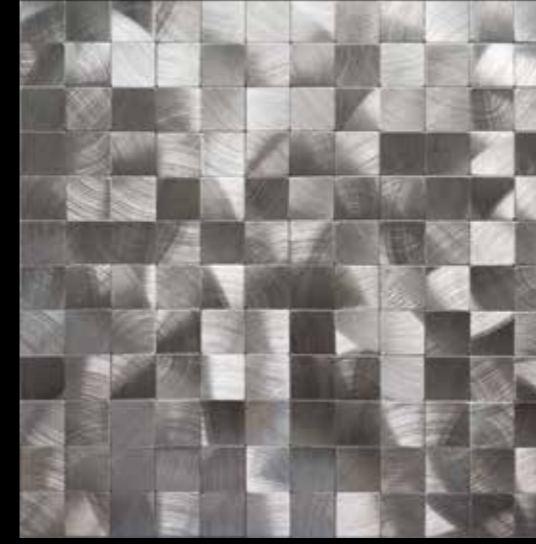
HOW TO INSTALL ?

1. Clean your wall with damp cloth. Please be sure that your wall is flat.
2. The designated area is determined by drawing on the wall.
3. Remove the product from the box, part of the band on the back is opened from the top. Avoid contact with the adhesive surface and provide protection from dust and dirty.
4. Product is pasted to designated area from first top part. The band is pulled downwards.
5. This application is repeated for all surface.
6. Can be used metal scissors for the cutting and drilling or if available can be used circle saw.
7. There is no need to make a joint gap.

IMPORTANT POINTS

- The backside is 3M self adhesive band.
- It is not used in wet areas.
- It is not used in areas where fire can directly exposed.
- The product can only be used for interior decoration.
- The area to be use must be a smooth surface. It should be cleaned from dust, dirt and debris.
- Flooring is not recommended.
- It is not use on scratch coat.
- It is not use on rough surface.
- The used product is not used for the second time.
- Not cleaned with acid chemical cleaners.
- Application to moist and damp walls is not recommended

PEEL & STICK METAL MOSAIC SERIES



SILVER METAL



GOLD METAL

TEXTURES

PVC PEEL & STICK WOOD MOSAIC SERIES



SQUARE WOOD



HEXAGON WOOD

PCV

DO IT YOURSELF | DIY



DESIGN COLLECTION

CHANGE YOUR WALL

WOOD
MOSAIC
SERIES

handmade wooden mosaic that is made by meticulously.

Wooden mosaics from rosewood are baked and varnished. No extra processing required during application. It is light and natural.

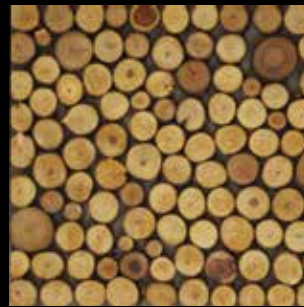
The installation is so easy. Adhesive such as silicone, mastic, liquid nail and mounting kit is applied to the back surface of the product and place to wall.



AMAZON
DARK



AMAZON
LIGHT



NATURAL
LOG



TROPICAL
DARK



TROPICAL
LIGHT



| PRODUCT NAME | SIZE | PACKAGING TYPE |
|----------------|-------|----------------|
| AMAZON DARK | 30x30 | 4 Paket-Box |
| AMAZON LIGHT | 30x30 | 4 Paket-Box |
| TROPICAL LIGHT | 15x60 | 6 Paket-Box |
| TROPICAL DARK | 15x60 | 6 Paket-Box |
| NATURAL LOG | 40x60 | 1 Paket-Box |

LEATHER CLAPBOARD

You can easily and originally decorate the areas with this Leather Clapboard product which has real leather looks, and give your rooms a rich look. Easy cutting, lightweight and large size provides great convenience.

DESIGN COLLECTION

CHANGE YOUR WALL

Leather Clapboard produced with polyurethane glue are extremely durable and long lasting.

Leather Clapboard that doesn't need any professional team and equipment can install easily and provide stylish design with their profiles.

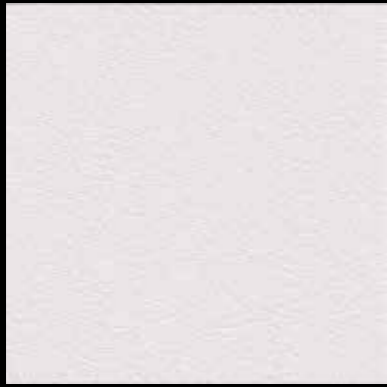
- WATERPROOF
- SOUND INSULATION
- ECO FRIENDLY
- EASY INSTALLATION
- EASY CLEAN
- B1 FIRE CLASSIFICATION



DESIGN COLLECTION

CHANGE YOUR WALL

LEATHER CLAPBOARD



22
Thickness
3 mm
Size
110x220 cm

LEATHER PANEL



23
Thickness
3 mm
Size
110x220 cm



24
Thickness
3 mm
Size
110x220 cm



32
Thickness
3 mm
Size
110x220 cm



012
Thickness
7mm

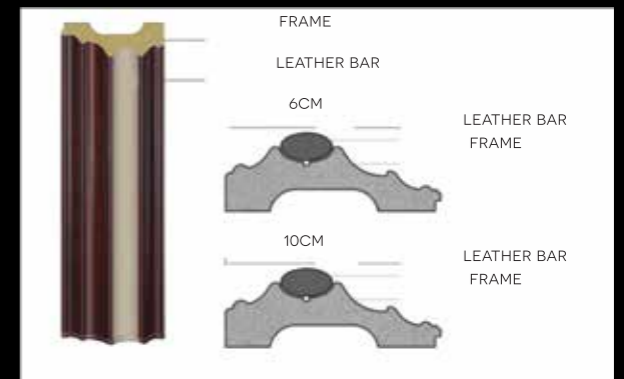


APPLICATION AREA

- INTERIOR WALL
- CEILING
- HEADBOARD
- FURNITURE
- BEHIND THE TV UNIT
- HOTEL DECORATION
- HOTEL LOBBIES
- RESTAURANTS
- SCHOOLS



FRAME



GLUE OPTIONS

- Acrylic based adhesive
- Silicone or mastic adhesive
- Liquid nail mounting adhesive

HOW TO USE ?

- The application area must be cleaned and the area must be flat.
- If the application area is rough and faulty, it must be smoothed with filling materials.
- The panel can be cut to the desired size. Cutting can be done with a knife or circle saw. The protective foil on the panel will protect the product during transportation and cutting.
- The preferred glue must be applied carefully to the back of the panel.
- The panel can be placed on a flat application area by hand.
- Metal profiles can be used for edges and connecting between panel.
- Bellagente Plasmer Accessories can be used for decorative designs on the panel.

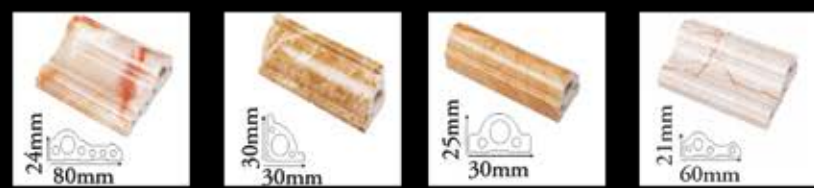


DESIGN
COLLECTION
CHANGE YOUR WALL

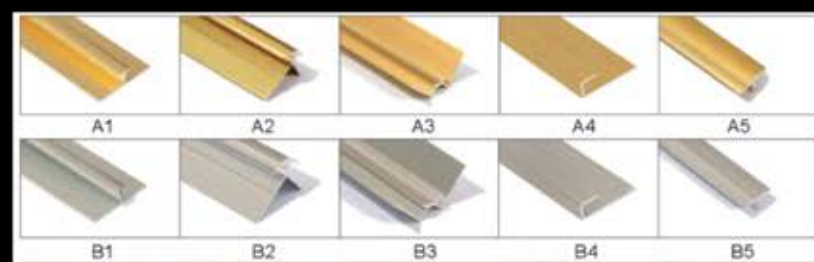
PLASMER
SERIES

| SIZE | THICKNESS | WEIGHT |
|--------------|-----------|--------|
| 122 x 244 cm | 3 mm | 15 kg |

| | | | |
|--|---------|--|---------|
| | PLM-03 | | PLM-08 |
| | PLM-14 | | PLM-17 |
| | PLM-26 | | PLM-45 |
| | PLM-46 | | PLM-47 |
| | PLM-57 | | PLM-100 |
| | PLM-108 | | PLM-110 |
| | PLM-113 | | PLM-123 |
| | PLM-124 | | PLM-128 |
| | PLM-129 | | PLM-134 |
| | PLM-136 | | PLM-138 |
| | PLM-144 | | PLM-18 |



THE LENGTH OF BELLAGENTE PLASMER ACCESORIES IS 3 METERS



THE LENGTH OF BELLAGENTE METAL ACCESORIES IS 2.5 METERS

PLASMER

Bellagente Plasmer that is provide many advantage is the best alternative instead of the marble and ceramic for your interior.

Bellagente Plasmer that doesn't need any professional team and equipment can install easily and provide stylish design with their PVC marble and metal profiles.

ADVANTAGES

- Waterproof
- Fireproof
- Anti-Moisture
- Surface protection with UV layer
- Anti-bacterial and anti-insect
- Lightweight and easy to carry
- Easy to clean
- Resistant to scratching
- Easy and fast to install
- Economic

WHERE CAN YOU USE ?

- Bathroom
- Kitchen
- Splash back
- All wet areas
- Elevator cabinet and sides
- Interior decoration
- Building entrances and lobbies
- Furniture Industry (Table, coffee table, cabinet etc.)
- Door surfaces
- Fair and exhibition decoration

Panel size is 15x60cm and 30x60cm

The surface is real natural stone

The backside is 3M self adhesive band.

It is not used in wet areas.

It is not used in areas where fire can directly exposed.

The product can only be used for interior decoration.

The area to be use must be a smooth surface. It should be cleaned from dust, dirt and debris.

Flooring is not recommended.

It is not use on scratch coat.

It is not use on rough surface.

The used product is not used for the second time.

Not cleaned with acid chemical cleaners.

Application to moist and damp walls is not recommended.



DESIGN COLLECTION

CHANGE YOUR WALL

DO IT
YOURSELF | DIY



Why DIY Self Adhesive Stone ?

- It is a real natural stone. It is thin, light and natural.
- DIY Self Adhesive Stone is packed in stylish boxes containing 10 pieces products.
- It is extremely simple to use. This simplicity is indicated on the instructions manual that is in the product box.
- Users pays only product cost. They never pay carrying, master, glue, cleaning cost.
- This new and innovative product will appeal to users who are looking for innovation.
- DIY Self Adhesive stone will appeal to users who has Do It Yourself Capability.



| | |
|--|------|
| | 2002 |
| | 2003 |
| | 2005 |
| | 2006 |
| | 2007 |
| | 2013 |
| | 2014 |
| | 2015 |
| | 2016 |
| | 2017 |
| | 2018 |
| | 2008 |
| | 2009 |
| | 2027 |

1. Clean your wall with damp cloth. Please be sure that your wall is flat.
2. The designated area is determined by drawing on the wall.
3. Remove the product from the box, part of the band on the back is opened from the top. Avoid contact with the adhesive surface and provide protection from dust and dirty.
4. Product is pasted to designated area from first top part. The band is pulled downwards.
5. This application is repeated for all surface.
6. Can be used metal scissors for the cutting and drilling or if available can be used circle saw.
7. There is no need to make a joint gap.

EASY
INSTALL DO IT
YOURSELF



Slim natural stone veneer sheets are made of natural slate. The slate surface is split and separated into very thin layers of stone. It is then combined with fibre glass and polyester resins to create a flexible panel. The total thickness of thin stone veneer panel is 1mm and 2mm. Irregular surface of slate and variety of colour make every sheet unique. Slim, light and flexible stone provide many advantages for your application.

Also we have translucent (light passing) slim natural stone veneer.

The installation is so easy. It can be used on the wall, plaster surface, beton, mdf, ceramic surface for indoor and outdoor.

Advantages

- Super thin
- Super flexible
- Super light
- Simple and different application
- Durable
- Low transportation cost
- An alternative for outdoor
- Easy cutting and packing

Where can it be used ?

- interior and exterior wall covering
- lift cabinet
- Ceiling
- Interior Architecture
- Furniture
- Door surface
- Table
- Coffee Table
- Tv units
- Bathroom and Kitchen Cabinet
- Boat, vessel and aircraft decoration
- Exhibition decoration



DESIGN
COLLECTION

CHANGE YOUR WALL

SLIM
NATURAL
STONE

| | |
|--|---------------------------|
| | 2001 SPICE CRAFT |
| | 2002 COOPER |
| | 2003 FOREST FIRE |
| | 2004 BLACK GOLD |
| | 2005 GOLDEN GHOOSE |
| | 2006 AUTUMUN |
| | 2007 BLACK GALAXY |
| | 2009 TEAK |
| | 2010 MINT |
| | 2011 PLATINUM BLACK |
| | 2012 SILVER SHINE |
| | 2013 SILVER SHADOW |
| | 2014 CARBON BLACK |
| | 2015 MYSTIC |

| | |
|--|---------------------------------|
| | 2019 SPECIAL MYSTIC |
| | 2020 SILVER GALAXY |
| | 2021 K BLACK |
| | 2022 ATLANTIC |
| | 2023 ETA GOLD |
| | 2024 AGRA RED |
| | 2025 MINT YELLOW |
| | 2026 RAINBOW |
| | 2027 RAIN FOREST BROWN |
| | 2028 RAIN FOREST GREEN |
| | DARK CONCRETE |
| | MEDIUM CONCRETE |
| | LIGHT CONCRETE |



| KOD | ISIM | 61*122 | 105*210 | 122*244 | 61*122 | 105*210 | 15*60 | 30*60 |
|------|-----------------|--------|---------|---------|--------|---------|-------|-------|
| 2001 | SPICE CRAFT | VAR | YOK | VAR | YOK | YOK | YOK | YOK |
| 2002 | COPPER | VAR | YOK | VAR | YOK | YOK | VAR | VAR |
| 2003 | FOREST FIRE | VAR | YOK | VAR | YOK | YOK | VAR | VAR |
| 2004 | BLACK GOLD | VAR | YOK | VAR | YOK | YOK | YOK | YOK |
| 2005 | GOLDEN GHOOSE | VAR | YOK | VAR | YOK | YOK | VAR | VAR |
| 2006 | AUTUMN | VAR | YOK | VAR | YOK | YOK | VAR | VAR |
| 2007 | BLACK GALAXY | VAR | YOK | YOK | YOK | YOK | VAR | VAR |
| 2008 | RAINBOW | VAR | YOK | YOK | YOK | YOK | YOK | YOK |
| 2009 | TEAK | VAR | YOK | YOK | YOK | YOK | YOK | YOK |
| 2010 | MINT | VAR | YOK | YOK | YOK | YOK | YOK | YOK |
| 2011 | PLATINUM BLACK | VAR | VAR | VAR | YOK | YOK | YOK | YOK |
| 2012 | SILVER SHINE | VAR | YOK | VAR | VAR | VAR | YOK | YOK |
| 2013 | SILVER SHADOW | YOK | YOK | VAR | YOK | YOK | VAR | VAR |
| 2014 | CARBON BLACK | YOK | YOK | VAR | YOK | YOK | VAR | VAR |
| 2015 | MISTIC | VAR | YOK | YOK | YOK | VAR | YOK | YOK |
| 2016 | MOON PEARL | VAR | YOK | YOK | YOK | YOK | YOK | VAR |
| 2017 | COTSWOLD STONE | VAR | YOK | YOK | YOK | YOK | VAR | VAR |
| 2018 | TERRA COTTA | VAR | YOK | YOK | YOK | YOK | VAR | VAR |
| 2019 | SPECIAL MISTIK | VAR | YOK | VAR | YOK | YOK | YOK | YOK |
| 2020 | SILVER GALAXY | YOK | VAR | YOK | YOK | YOK | YOK | YOK |
| 2021 | K BLACK | YOK | VAR | YOK | YOK | YOK | YOK | YOK |
| 2022 | ATLANTIC | VAR | YOK | YOK | YOK | YOK | YOK | YOK |
| 2023 | ETA GOLD | VAR | YOK | YOK | YOK | YOK | VAR | VAR |
| 2024 | AGRA RED | VAR | YOK | YOK | YOK | YOK | VAR | VAR |
| 2025 | MINT YELLOW | VAR | YOK | YOK | YOK | YOK | VAR | VAR |
| 2026 | RAINBOW-E | VAR | YOK | YOK | YOK | YOK | VAR | VAR |
| 2027 | RAINFORST BRONN | VAR | YOK | YOK | YOK | YOK | VAR | VAR |
| 2028 | RAINFORST GREEN | VAR | YOK | YOK | YOK | YOK | VAR | VAR |
| 2029 | TEAKWOOD | VAR | YOK | YOK | YOK | YOK | VAR | VAR |
| 2030 | METAL | VAR | YOK | YOK | YOK | YOK | YOK | YOK |
| 2031 | LIGHT CONCRETE | VAR | VAR | YOK | YOK | YOK | YOK | YOK |
| 2032 | MEDIUM CONCRETE | VAR | VAR | YOK | YOK | YOK | YOK | YOK |
| 2033 | DARK CONCRETE | VAR | VAR | YOK | YOK | YOK | YOK | YOK |



RECOMMENDED GLUE

We remomend Kerakoll Superflex Eco that is double component PUR glue for the best solution for your interior and exterior.

Also Fugabella Eco PU 40 can use for quick and practical result in interior application.



SUPERFLEX ECO 8 Kg.



FUGABELLA ECO 310 MI.

HOW TO APPLY?

- Fiberglass panel must install with through joint spacing to on a flat and solid surface or must install by screwing them on the surface-contacting parts.

- Use about 20 screws for one panel.

- Add about 2% hardener into polyester mastic as needed and mix thoroughly.

- Fill polyester mastic in the heads and joint spaces of the screws with a fine-tipped spatula or with the help of suitable tools.

- For the color continuity, make the necessary corrections by using tools such as brush, spatula, pen spatula, fine screwdriver.

- You must paint mastic applied area with fine-tipped brush. after drying of polyester mast.

- You will see a great application after drying paint.

PRODUCT FEATURES

1- Produced from polyester, fiberglass and natural stone powder.

2- Panel size is 135 cm x 335 cm

3- The weight is 6-8kg/m² and the thickness is 3-4mm.

4- It is flameproof and can be used at high temperatures and under high temperatures in the sun.

5- It has UV resistant.

6- It has impact resistant.

7 - It is waterproof and anti-moisture. Can be used for interior and exterior.

8 - It does not contain any carcinogenic substances. It is an environmental product.

9 - It can be easily cut with a diamond saw or jigsaw.

10 - It can be cleaned by wiping or washing.

11 - Can be used for interior and exterior.

12- Demount panels are using again for different application with a new size cutting.

13- All of our products are painted with exterior paint.



DESIGN
COLLECTION

CHANGE YOUR WALL

FIBERGLASS
SERIES

TEXTURES

| | | | |
|---------|---------|---------|---------|
| PC 1403 | PC 1402 | PC 1401 | PC 1400 |
| PC 1310 | PC 1309 | PC 1308 | PC 1307 |
| PC 1306 | PC 1305 | PC 1109 | PC 1108 |
| PC 1107 | PC 1106 | PC 825 | PC 824 |
| PC 823 | PC 822 | PC 821 | PC 820 |
| PC 819 | PC 818 | PC 816 | PC 815 |
| PC 814 | PC 813 | PC 812 | PC 811 |
| PC 810 | PC 717 | PC 716 | PC 715 |
| PC 714 | PC 713 | PC 712 | PC 711 |

| | | | |
|--------|--------|--------|--------|
| PC 710 | PC 709 | PC 708 | PC 612 |
| PC 611 | PC 610 | PC 609 | PC 608 |
| PC 607 | PC 606 | PC 518 | PC 517 |
| PC 516 | PC 509 | PC 414 | PC 413 |
| PC 412 | PC 410 | PC 409 | PC 408 |
| PC 407 | PC 316 | PC 315 | PC 314 |
| PC 313 | PC 312 | PC 311 | PC 310 |
| PC 309 | PC 308 | PC 307 | PC 214 |
| PC 213 | PC 212 | PC 211 | PC 210 |
| PC 209 | PC 208 | PC 207 | PC 112 |
| PC 111 | PC 110 | PC 109 | PC 108 |
| PC 107 | | | |

| |
|-----------|
| FBR-137 |
| FBR-136 |
| FBR 136-C |
| FBR 136-B |
| FBR 136-A |
| FBR 135-F |
| FBR 135-E |
| FBR 135-D |
| FBR 135-C |
| FBR 135-B |
| FBR 135-A |
| FBR 133-F |

| |
|-----------|
| FBR 133-E |
| FBR 133-D |
| FBR 133-C |
| FBR 133-B |
| FBR 133-A |
| FBR 132-C |
| FBR 132-B |
| FBR 132-A |
| FBR-129 |
| FBR-120 |
| FBR-115 |
| FBR-101 |

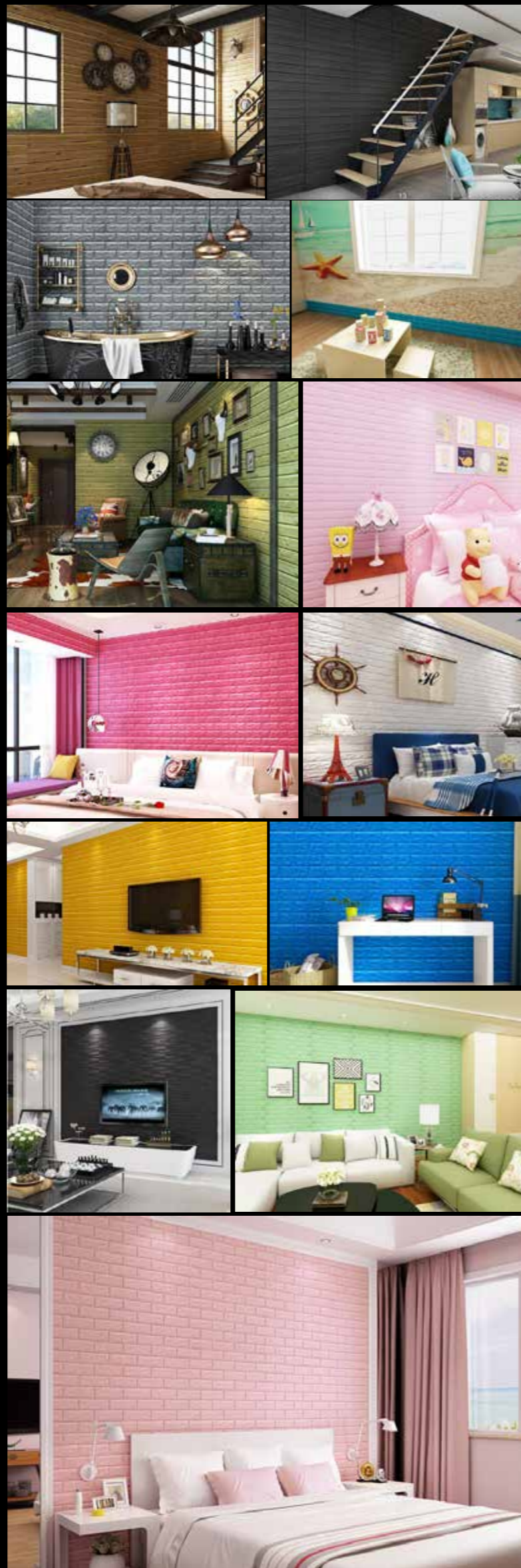


How to use ?

1. Clean your wall with damp cloth. Please be sure that your wall is flat.
2. The designated area is determined by drawing on the wall.
3. Remove the product from the box, part of the band on the back is opened from the top. Avoid contact with the adhesive surface and provide protection from dust and dirty.
4. Product is pasted to designated area from first top part. The band is pulled downwards.
5. This application is repeated for all surface.
6. After sticking, press by hand to provide final adhesion.
7. While the product is stucked, the joint areas are stucked together carefully.

Important Points ?

1. It is not used in wet areas.
2. It is not used in areas where fire can directly exposed.
3. The product can only be used for interior decoration.
4. The area to be use must be a smooth surface. It should be cleaned from dust, dirt and debris.
5. Flooring is not recommended
6. It is not use on scratch coat.
7. It is not use on rough surface.
8. The used product is not used for the second time.
9. Not cleaned with acid chemical cleaners
10. Application to moist and damp walls is not recommended.
11. It is recommended to use it in kindergarten and children's rooms by its ability to prevent injuries with soft texture and impact preventive structure.



**DESIGN
COLLECTION**
CHANGE YOUR WALL

SELF
ADHESIVE
FOAM

SELF ADHESIVE FOAM

You can do it your application by yourself with DIY FreeWall without construction area. It will appeal to users who has Do It Yourself Capability.

1. It does not contain any carcinogenic substances.
2. Cleaning is very simple.
3. it prevents injuries especially in children's bumps with its soft texture and impact preventive structure.
4. Contributes to thermal insulation.
5. Antibacterial
6. It prevents mildew
7. Provides sound and moisture isolation.
8. Odorless.
9. Lightweight, elastic and environment friendly.
10. It is not affected by chemicals.

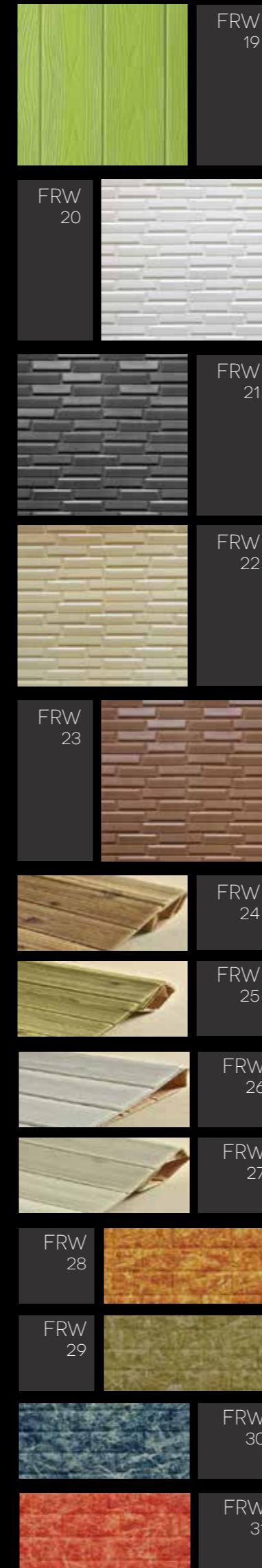
Why DIY FreeWall ?

- It is extremely simple to use. This simplicity is indicated on the instructions manual that is in the product box.

- Users pays only product cost. They never pay carrying, master, glue, cleaning cost.

- This new and innovative product will appeal to users who are looking for innovation.

- DIY Self Adhesive stone will appeal to users who has Do It Yourself Capability.



TEXTURES



DESIGN
COLLECTION
CHANGE YOUR WALL

DO IT
YOURSELF | DIY

DO IT
YOURSELF | DIY

DO IT YOURSELF | DIY

PRODUCT DESCRIPTION

Sticker peel and stick backsplash tiles are smart and unique products that will simplify your life. This kind of wall sticker is made from embossed 3D PU with self-adhesive back, peel and stick on wall. You will be surprised by the special and graceful style after you install them on your wall.

The Sticker can also be easily installed directly over existing panels or smooth surface. Especially designed for kitchen backsplashes and bathroom backsplashes, the tiles are resistant to the heat of stovetops and the humidity of bathrooms (do not use in shower). The tile can also be used in other place such as accent walls, cabinet door coverings, mirror or tub surrounds.

Product Features

* Quickly Installed Without Any Mess or Specialized Tools (Light weight, easy to cut and easy wipe to remove the stains)

* Especially Designed for Kitchen and Shower (Resistant to heat of stovetops and humidity of shower)

* High Quality and Eco-friendly Materials (Made of non-toxic materials, Anti-mold & Anti-bacterial)

* Guaranteed to Stick to Your Walls (No extra glue, will never yellow or crack over time)

* Save Your Time and Money (Tiling in a few minutes & No labor costs, easy do it by yourself)

How to use Sticker tiles?

- 1-Clean up the walls and ensure dryness
- 2-Measure the wall and then cut the tile to fit it
- 3-Peel and stick, splicing Sticker tiles

| SURFACE SUITABLE FOR APPLICATION | SURFACE NOT SUITABLE FOR APPLICATION |
|---|--|
| <ul style="list-style-type: none"> • Glass • Acrylic • Ceramic • PVC and plastic surface • Flat and dry wall • Waterproof surface | <ul style="list-style-type: none"> • Rugged wall • Unflat wall • Oiled Wall • Unclean wall • Moldy wall • Cracked wall • Freshly painted wall |

APPLICATION



TEXTURES



S-10

25.4 X 25.4 CM

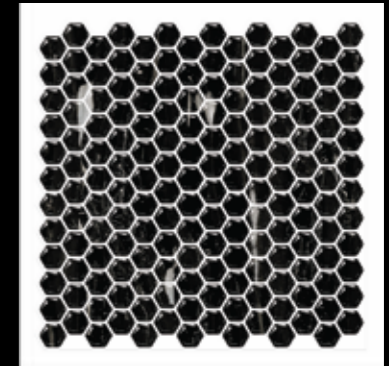


S-05

25.4 X 25.4 CM

S-03

25.4 X 25.4 CM



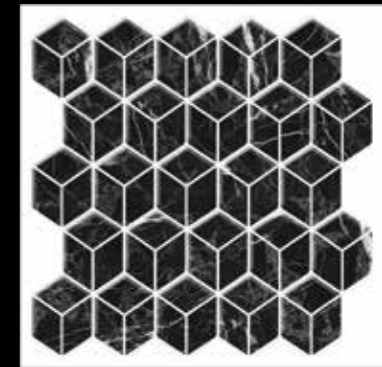
S-09

25.4 X 27 CM



S-08

25.4 X 25.4 CM



S-01

25.4 X 25.4 CM

S-04

25.4 X 25.4 CM



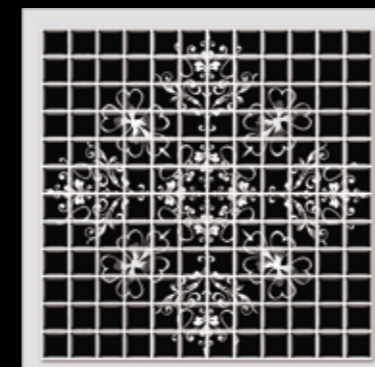
S-06

25.4 X 25.4 CM



S-07

25.4 X 25.4 CM



S-02

25.4 X 25.4 CM